

HOW TO Help Your Patients Manage Their Pain

EVIDENCE-BASED EXPERTISE

1.

Credentials matter

Experienced board-certified, fellowship-trained pain physicians educated at top academic centers evaluate patients based on their medical history, physical examination, and diagnostic evidence to formulate a specialized treatment plan.



CONSULTATIONS AVAILABLE

2.

Contact us anytime

Our pain experts evaluate your patients and send office notes within 24 hours so that you can stay apprised of your patient's progress. We also have protocols in place so that peer-to-peer communication is readily available between offices.



RELIEF THROUGH INNOVATION

3.

Interventional pain medicine

We utilize cutting-edge technology to provide long-lasting, drug-free solutions:

- Chronic neuropathic and CRPS pain → Spinal cord stimulator trial & permanent implantation
- Chronic axial neck, back and thoracic pain → Radiofrequency Ablation Neurotomy
- Joint or tendon pain → Platelet-Rich-Plasma injections performed under U/S guidance
- Cancer pain → Neurolytic sympathetic blocks



JUMPSTART PATIENT PROGRESS

4.

Multimodal treatment = comprehensive care

Patients referred to Sussex Pain Relief Center will be evaluated for every treatment option we offer from CAM therapies, to interventional procedures and regenerative medicine options. On-site services include medical massage, acupuncture, physical therapy, and cognitive behavioral therapy.

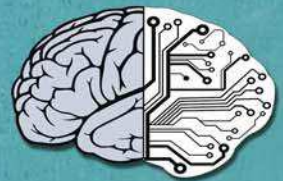


SELF-MANAGEMENT PAIN TRAINING

5.

Education provides insight

Patients can enroll in a free, 6-week program in which they will be personally coached on how to employ coping strategies in managing their pain condition. Patients and their caretakers will also be educated on various aspects of living life as a pain patient so they can be better engaged in their treatment.



REGENERATIVE MEDICINE IS HERE

6.

Harness natural healing abilities

Regenerative medicine is a new innovative treatment for long-term relief of joint and soft tissue pain. Platelet-Rich-Plasma (PRP) and stem cell injections are performed under real-time ultrasound guidance for accuracy.



LIMITED MED MANAGEMENT

7.

Medication with conditions

Sussex Pain Relief Center focuses on providing non-opioid, non-steroid drug therapy to reduce drug abuse and adverse side effects for patients. Patients requiring medication will be treated under strict opioid risk management protocols including questionnaires, daily PDMP reports, urine drug testing and pill counts.



AAAHC ACCREDITATION

8.

Patient safety comes first

Our facility is AAAHC-Accredited for Office Based Surgery and is compliant with DHSS-OHFLC regulations governing facilities that perform invasive medical procedures in order to meet the highest standards of patient safety.



WE ACCEPT ALL INSURANCES

9.

We care about our community

In order to provide treatment for the full range of patients that our practice sees in our community, we accept all major insurances including Medicaid, Medicare, all commercial insurances, as well as Workers Comp and Auto Injury.



24-HR APPOINTMENT FOR AUTO PATIENTS

10.

Timing makes a difference

Appointments will be provided within 24-48 hours for acutely injured auto accident patients with a focus on a safe and fast recovery in order to restore function to pre-injury levels. The Designated Injury Coordinator is well-versed in legal paperwork involving Workers Comp and Auto Injury patients. Expert witness services such as IME, Chart Review and Narrative Reports are provided by SEAK-trained providers.



LOCALLY AFFILIATED

11.

Hospitals and surgical centers

Sussex Pain Relief Center is affiliated with Local Hospitals and Surgical Centers

- Beebe Medical Center, 424 Savannah Road, Lewes, DE 19958
- Nanticoke Memorial Hospital, 801 Middleford Road, Seaford, DE 19973
- Nanticoke Surgical Center, 400 Health Services Drive, Seaford, DE 19973



GUARANTEED APPOINTMENTS

12.

Patients with all paperwork punctually seen

Your patient will receive appropriate treatment and a guaranteed appointment within two weeks provided that all the necessary paperwork is provided in a timely fashion. This means the last three office notes, imaging studies, demographics and specialist notes, if any, are all required to accept your patient. If you want to know more about how we will treat your patients, schedule a visit with us at our Georgetown location by calling us at 302-519-1616.

